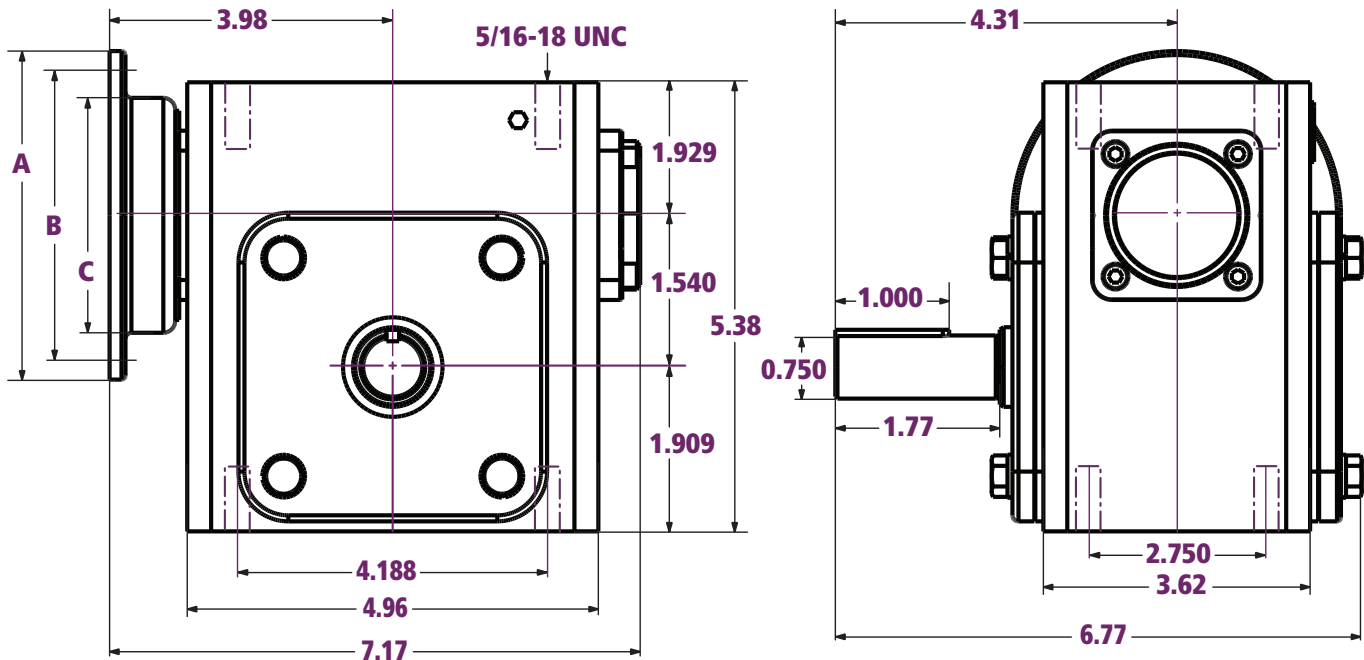




X154 Dimensions

All dimensions listed in inches



Motor Options & Dimensions (in)

NEMA Frame	Motor Shaft Dia. (in)	A	B	C
		OD Flange	Bolt Circle	Pilot Bore
56C	0.625	6.50	5.88	4.5

Ratios

Nominal Ratios	Exact Ratios
5:1	5.0:1
10:1	10.0:1
15:1	15.0:1
20:1	20.0:1
30:1	30.0:1
40:1	40.0:1
50:1	50.0:1
60:1	60.0:1

Efficiency

Nominal Ratios	Efficiency (%)
5:1	≈ 92
10:1	≈ 88
15:1	≈ 86
20:1	≈ 81
30:1	≈ 74
40:1	≈ 68
50:1	≈ 66
60:1	≈ 59

Specifications

Center Distance (in)	Weight (lbs)	Est. Oil Fill Amount* (oz)
1.540	15.4 [16.5 [†]]	11.5

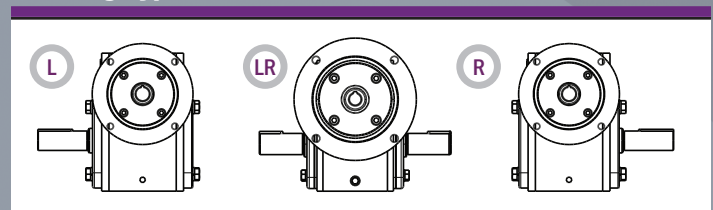
*For Position 1

[†]Approximate weight for LR Handing

Output Shaft

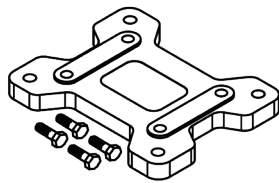
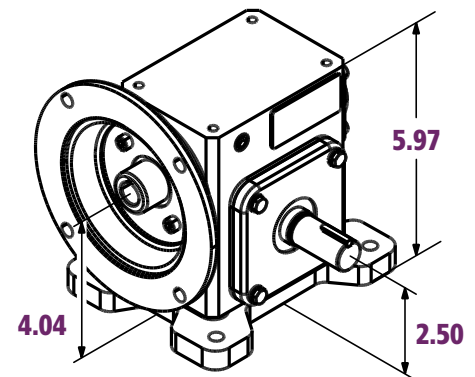
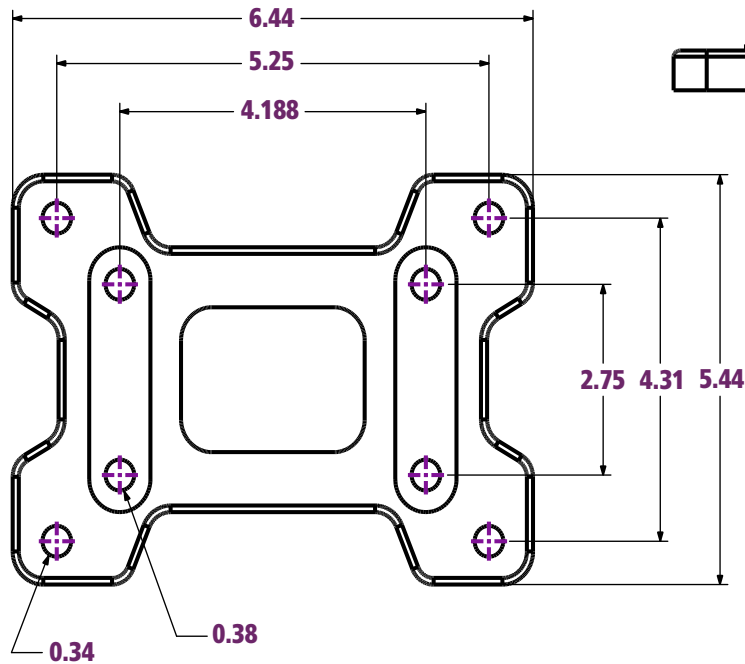
Output Shaft (in)	Output Keyway (in)
0.750	3/16 x 3/32

Handing Types



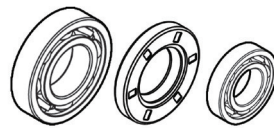
X154 Accessories

and X154 Base Kit Dimensions



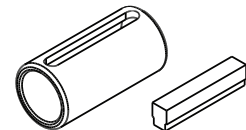
Foot Mounted Base Kit

XBK154



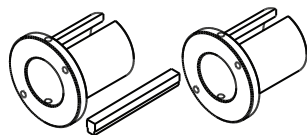
Component Repair Kit

XRK154



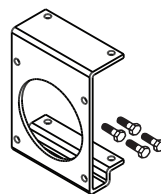
Input Quill Adapter Option

None



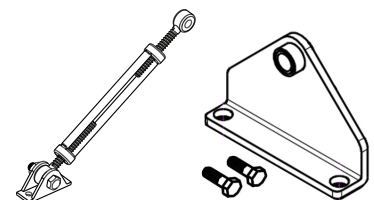
Output Bushing Kits*

Not Applicable



Output Bracket Kit*

XOB154



Torque Arm Kit*

XTA154

*Made to order.